

Holiday Inn Milton Keynes East M1, Jct.14



[View the Access Guide](#)

London Road, Newport Pagnell, Milton Keynes, Buckinghamshire MK16 0JA

0871 510 1369

www.ihg.com/holidayinn/hotels/gb/en/newport-pagnell/mlkr/hoteldetail (<https://www.ihg.com/holidayinn/hotels/gb/en/newport-pagnell/mlkr/hoteldetail>)

Guide Last Updated: 13/02/2018

[Something changed? \(/contact/something_changed?destination=/access-guide/kew-green/holiday-inn-milton-keynes-east-m1-jct14\)](#)



Google

(<https://maps.google.com/maps?ll=52.06695,-0.699916&z=14&t=m&hl=en-US&gl=US&mapclient=apiv3>)

Map data ©2018 Google

Access Guide



[Explain these icons \(/our-icons\)](#)

[Expand all](#) [Collapse all](#)

Hotel Introduction

[Collapse -](#)

Related Access Guide(s)

[Collapse -](#)

- [For the Holiday Inn Milton Keynes East M1, Jct.14 - Conference Facilities DisabledGo access guide please click here \(new tab\)](https://www.disabledgo.com/access-guide/holiday-inn/holiday-inn-milton-keynes-east-m1-jct14---conference-facilities) (<https://www.disabledgo.com/access-guide/holiday-inn/holiday-inn-milton-keynes-east-m1-jct14---conference-facilities>).

Hotel Information

[Collapse -](#)

- The hotel has its own parking facilities.
- This hotel has its own restaurant located on the ground floor.
- Conference/meeting facilities are available.
- The conference/meeting facilities are located on the ground floor.

Room Information

[Collapse -](#)

- The hotel has 54 rooms in total.

- There is an/are accessible room(s) within the hotel.
- The accessible room(s) is/are located on the ground floor.
- The hotel has 1 accessible room(s) with accessible ensuite facilities.
- There is/are 1 accessible room(s) with a bath.
- There is a/are standard room(s) available on the ground floor.
- There is not an/are not adjoining room(s) available for the standard room(s).
- Rooms on other floors are accessed via stairs.

Auxiliary Aids

Collapse -

- Vibrating pillows with flashing beacons are available on request.
- Bed raisers are not available on request.
- Bath mats are available on request.
- All televisions have subtitles available.

Getting Here

Collapse -

By Road

Collapse -

- This hotel is located on the outskirts of Milton Keynes, just off Junction 14 of the M1. The hotel is located on the A509.
- This hotel has a car park which is free for all users.

By Bus

Collapse -

- There is a bus stop within 150 metres of the hotel.
- The nearest bus stop is located on the opposite side of the A509.
- [For more information on buses in the Milton Keynes area please click here \(opens new tab\) \(http://www.redrosetravel.com\).](http://www.redrosetravel.com)

By Train

Collapse -

- The nearest Railway Station is Wolverton.
- Wolverton Station is situated to the north west of Milton Keynes, located approximately 6 miles from the hotel. There are bus and taxi routes to the hotel from the station.
- [For more information on National Rail please click here \(opens new tab\) \(http://www.nationalrail.co.uk/stations/wol/details.html\).](http://www.nationalrail.co.uk/stations/wol/details.html)

Getting Help and Assistance

Collapse -

- There is a member of staff available for help and assistance.
- Staff receive disability awareness/equality training.
- Staff do not receive deaf awareness training.
- There is not a member of staff trained in British Sign Language.
- British Sign Language interpreters cannot be provided on request.
- The alternative formats documents can be provided in include; large print on request.
- There is an assistance dog toilet or toileting area at the venue/near by.
- The assistance dog toilet or toileting area is located on the grass areas surrounding the hotel.
- Water bowls for assistance dogs are available.
- There are not mobility aids available.

Parking

Collapse -

Parking

Collapse -

- The hotel does have its own parking facilities.
- The car park is located at the front of the hotel.
- The car park type is open air/surface.
- The car park does not have a height restriction barrier.
- The car park does not have a barrier control system.
- The car park surface is tarmac.
- There is a/are Blue Badge parking bay(s) available.
- The Blue Badge bay(s) is/are signposted and have markings which are faded.
- There is/are 3 designated Blue Badge parking bay(s) within the car park.
- The dimensions of the designated Blue Badge parking bay(s) surveyed are 360cm x 502cm (11ft 10in x 16ft 6in).
- There is not a 120cm hatched zone around the Blue Badge parking bay(s).
- Parking spaces for Blue Badge holders do not need to be booked in advance.
- Clearly marked/signposted parent and child parking bays are not available.
- All parking spaces are provided on a first come first served basis.

Paying

Collapse -

- There are not parking charges for the car park.

Access from the Car Park

Collapse -

- The route from the car park to the entrance is accessible to a wheelchair user with assistance.
- Assistance may be required because there is/are slopes/ramps.
- The entrance is clearly visible from the car park.
- The surface on the approach to the entrance is tarmac and block paving.
- There is not a road to cross between the car park and the entrance.
- The nearest designated Blue Badge parking bay is approximately 6m (6yd 1ft) from the accessible car park entrance.

Drop-off Point(s)

Collapse -

- There is not a/are not clearly marked drop-off point(s).



1



2



3



4

Outside Access (Car Park Ramped Entrance)

Collapse -

Entrance

Collapse -

- This information is for the entrance located to the right of the hotel, in the car park.
- The entrance area/door is clearly signed.
- There is ramped/sloped or stepped access at this entrance.
- There is a canopy or recess which provides weather protection at this entrance.
- There is a dark mat or floor marking at this entrance that might be perceived as a hole.

- The entrance door(s) does not/do not contrast visually with its immediate surroundings.
- The main door(s) open(s) towards you (pull).
- The door(s) is/are single width.
- The door(s) is/are heavy.
- The width of the door opening is 99cm.
- There is a small lip on the threshold of the entrance, with a height of 2cm or below.
- There is a second set of doors.
- The door(s) open(s) towards you (pull).
- The door(s) is/are double width.
- The door(s) is/are heavy.
- The width of the door opening is 132cm.
- There is a member of staff available for assistance at this entrance.

Ramp/Slope

Collapse -

- The ramp/slope is located in front of the entrance.
- The gradient of the ramp/slope is steep.
- The ramp/slope is permanent.
- There is not a level landing at the top of the ramp/slope.
- There is a/are handrail(s) at the ramp.
- The handrail(s) is/are on both sides.
- The ramp/slope does bypass the step(s).

Step(s)

Collapse -

- The step(s) is/are located to the left and right as you face the entrance.
- There is/are 1 step(s).
- The step(s) is/are clearly marked.
- The height of the step(s) is/are between 15cm and 18cm.
- The going of the step(s) is/are not between 30cm and 45cm.
- There is not a/are not handrail(s) at the step(s).



1



2



3



4



5



6



7



8

Outside Access (Reception Entrance)

Collapse -

Entrance

Collapse -

- This information is for the entrance located at the front of the hotel.
- The entrance area/door is clearly signed.

- There is stepped access at this entrance.
- There is not a canopy or recess which provides weather protection at this entrance.
- There is a dark mat or floor marking at this entrance that might be perceived as a hole.
- The entrance door(s) does/do contrast visually with its immediate surroundings.
- The main door(s) open(s) away from you (push).
- The door(s) is/are single width.
- The door(s) is/are heavy.
- The width of the door opening is 92cm.
- There is a small lip on the threshold of the entrance, with a height of 2cm or below.
- There is a second set of doors.
- The door(s) open(s) towards you (pull).
- The door(s) is/are single width.
- The door(s) is/are heavy.
- The width of the door opening is 90cm.

Step(s)

Collapse -

- The step(s) is/are located in front of the entrance.
- There is/are 3 step(s).
- The step(s) is/are not clearly marked.
- The height of the step(s) is/are between 15cm and 18cm.
- The going of the step(s) is/are not between 30cm and 45cm.
- There is a/are handrail(s) at the step(s).
- The handrail(s) is/are on both sides.
- Handrails are at the recommended height (90cm-100cm).
- Handrails do cover the flight of stairs throughout its length.
- Handrails are easy to grip.
- Handrails do not extend horizontally beyond the first and last steps.



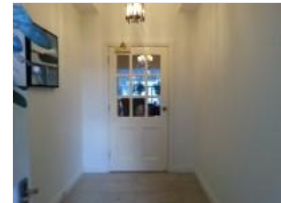
1



2



3



4



5



6

Reception

Collapse -

Reception

Collapse -

- The reception point is located on the ground floor, to the left as you enter the car park ramped entrance.
- The reception point is approximately 27m (29yd 1ft) from the car park ramped entrance.
- Clear signage for the reception area/desk is visible from the entrance.
- There is ramped/sloped or stepped access to the reception point.
- There is a clear unobstructed route to the reception point.

- There are no windows, TVs, glazed screens or mirrors behind the reception point which could adversely affect the ability of someone to lip read.
- The reception counter is not placed in front of a background which is patterned.
- The lighting levels at the reception point are low.
- The height of the reception counter is high (110cm+).
- There is sufficient space to write or sign documents on the counter.
- There is not a lowered section of the counter.
- The counter is staffed.
- Clipboards can be provided to anyone who is unable to use the desk.
- There is not a hearing assistance system at the reception point.
- Signs and universally accepted symbols or pictograms, indicating lifts, stairs, WCs, circulation routes and other parts of the building are not provided in the reception area.
- The type of flooring in the reception area is laminate.

Reception Waiting Area

Collapse -

- There is a waiting area close to the reception point.
- Access to the waiting area is unobstructed.
- There are seats with armrests on both sides.
- There is sufficient space for a wheelchair user to use the waiting area.



1



2



3



4

Ramp(s) or Slope(s) (Reception Area)

Collapse -

- There is a ramp/slope located on the ground floor, leading to the reception foyer.
- The ramp/slope is used to access reception.
- The gradient of the ramp/slope is slight.
- The ramp/slope is permanent.
- There is a level landing at the top of the ramp/slope.
- There is a/are handrail(s) at the ramp.
- The handrail(s) is/are on the left going up.
- The width of the ramp/slope is 121cm (3ft 12in).
- The lighting levels at the ramp/slope are low.
- The ramp/slope does bypass the step(s).



1



2

Step(s) (Reception Area)

Collapse -

- There is a/are step(s) located on the ground floor, leading to the reception foyer.
- The step(s) is/are used to access reception.
- There is/are 2 step(s).

- The step(s) is/are clearly marked.
- The height of the step(s) is/are between 15cm and 18cm.
- The going of the step(s) is/are not between 30cm and 45cm.
- There is not a/are not handrail(s) at the step(s).
- The lighting levels at the step(s) are low.



1



2

Getting Around

Collapse -

Access

Collapse -

- There is step-free access throughout the ground floor.

Circulation

Collapse -

- There are doors in corridors/walkways which have to be opened manually.
- There are corridors/walkways with a surface width of less than 120cm (excluding any permanent obstructions over a small distance).
- The type of flooring in corridors/walkways is carpet and tiles.
- There is some flooring in corridors/walkways which includes patterns or colours which could be confusing or look like steps or holes to some people.
- There is some flooring in corridors/walkways which is shiny and could cause issues with glare or look slippery to some people.
- There is good colour contrast between the walls and floor in the majority of corridors/walkways.
- There are seats with armrests on both sides at regular intervals.
- The lighting levels are good.
- Access to other floors/levels is via stairs.

Signage

Collapse -

- Wayfinding signage is provided.
- The colour, design and typeface of signs is consistent throughout the building.

Audio

Collapse -

- This venue does play background music in public areas.
- Music is played in reception and bar/restaurant areas.
- There is not a hearing assistance system in the public areas of the building.



1



2



3



4



5



6

Eating and Drinking (Bar)

Collapse -

- The following information is for the bar.
- The bar is located ahead as you enter via the car park ramped entrance.
- There is step-free access to the bar.
- There is a/are double, heavy manual door(s) to access this area.
- Full table service is not available.
- Food and/or drinks are ordered from the service counter.
- Food and/or drinks can be brought to the table.
- The height of the service counter is high (110cm+).
- There is not a lowered section of the counter.
- There is not a hearing assistance system.
- There is step-free access within the bar.
- There is ample room for a wheelchair user to manoeuvre.
- This area does play background music.
- The type of flooring in this area is carpet and tiles.
- No tables are permanently fixed.
- No chairs are permanently fixed.
- Some chairs have armrests on both sides.
- The nearest table is approximately 3m from the entrance/opening.
- The nearest table is approximately 2m from the till/counter.
- The distance between the floor and the lowest table is 36cm.
- The distance between the floor and the highest table is 65cm.
- Plastic/takeaway cups are available.
- Plastic/takeaway cutlery is not available.
- Drinking straws are available.
- There are menu boards/signs available.
- Menus are not available in Braille.
- Menus are not available in large print.
- Picture menus are not available.
- Menus are clearly written.
- Menus are presented in contrasting colours.
- The type of food served here is hot and cold meals and snacks.
- The lighting levels are good.

Comments

Collapse -

- ==.



1



2



3



4

Eating and Drinking (Restaurant)

Collapse -

- The following information is for the restaurant.
- The restaurant is located on the ground floor, to the right as you enter via the car park ramped entrance.
- There is step-free access to the restaurant.
- There is a/are double, heavy manual door(s) to access this area.
- Full table service is available.
- There is not a hearing assistance system.
- There is step-free access within the restaurant.
- There is ample room for a wheelchair user to manoeuvre.
- This area does play background music.
- The type of flooring in this area is carpet.
- No tables are permanently fixed.
- No chairs are permanently fixed.
- No chairs have armrests on both sides.
- The nearest table is approximately 2m from the entrance/opening.
- The standard height for tables is 73cm.
- Plastic/takeaway cups are available.
- Plastic/takeaway cutlery is not available.
- Drinking straws are available.
- There are hand held menus available.
- Menus are not available in Braille.
- Menus are not available in large print.
- Picture menus are not available.
- Menus are clearly written.
- Menus are presented in contrasting colours.
- The type of food served here is hot and cold meals and snacks.
- The lighting levels are good.

Comments

Collapse -

- Access to the restaurant is through the bar.



1



2



3



4

Other Floors (Front)

Collapse -

Stairs

Collapse -

- Stairs can be used to access other floors.
- The stairs are for public use.
- The stairs are located to the left of the hotel, in the corridor to the left just past reception.
- The stairs are approximately 28m from the car park ramped entrance.
- Signs indicating the location of the stairs are not available from the entrance.
- There are manual, heavy, single doors to enter and exit the stairwell on all floors.
- The floors which are accessible by stairs are G, 1 and 2.
- There are 15+ steps between floors.
- The height of the step(s) is/are between the recommended 15cm and 18cm.

- The going of the step(s) is/are not between the recommended 30cm and 45cm.
- The steps are clearly marked.
- There is a/are handrail(s) at the step(s).
- The steps have a handrail on the right going up.
- Handrails are at the recommended height (90cm-100cm).
- Handrails do cover the flight of stairs throughout its length.
- Handrails are easy to grip.
- Handrails do extend horizontally beyond the first and last steps.
- There is a landing.
- Clear signs indicating the facilities on each floor are provided on landings.
- The lighting levels at the steps are good.

Other Information

Collapse -

- The service(s) on the floors which are not accessible is/are Rooms 48 to 54.The Pagoda suite.The Cowper Suite.The Woburn RoomThe Buckingham Room.The Aylesbury Room.Some Conference Rooms.



1



2



3



4

Other Floors (Rear)

Collapse -

Stairs

Collapse -

- Stairs can be used to access other floors.
- The stairs are for public use.
- The stairs are located in the corridor at the front right of the hotel.
- The stairs are approximately 45m from the car park ramped entrance.
- Signs indicating the location of the stairs are not available from the entrance.
- There are manual, heavy, single doors to enter and exit the stairwell on all floors.
- The floors which are accessible by stairs are G and 1.
- There are 15+ steps between floors.
- The height of the step(s) is/are between the recommended 15cm and 18cm.
- The going of the step(s) is/are not between the recommended 30cm and 45cm.
- The steps are clearly marked.
- There is a/are handrail(s) at the step(s).
- The steps have a handrail on the left going up.
- Handrails are at the recommended height (90cm-100cm).
- Handrails do cover the flight of stairs throughout its length.
- Handrails are easy to grip.
- Handrails do not extend horizontally beyond the first and last steps.
- There is a landing.
- Clear signs indicating the facilities on each floor are provided on landings.
- The lighting levels at the steps are good.

Other Information

Collapse -

- The service(s) on the floors which are not accessible is/are Rooms 24 to 47 and the mini gym.



1



2



3



4

Accessible Room(s) (Room 3)

Collapse -

Accessible Room Information

Collapse -

- The details in this section relates to the accessible room(s) with a lowered bath.
- This type of accessible room is located on the ground floor.
- There is step-free access to this type of accessible room.
- Guests need to open a door between the entrance and the room(s).
- The narrowest width of the corridor leading to the room surveyed was 143cm.

Bedroom Features

Collapse -

- The accessible room surveyed is located on the ground floor, in the rear left corridor.
- The accessible room surveyed at the time of the visit was Room 3.
- There is step-free access to the accessible room surveyed.
- There is numbered signage on or near the accessible room door.
- The door is manual with a key card lock.
- The fob/card reader height is 97cm.
- The width of the door is 84cm (2ft 9in).
- There are lowered spy holes available.
- The bed type is double.
- The bed height is not adjustable.
- The height of the bed is 65cm (2ft 2in).
- The measurement between the bed base and floor is 5cm (2in).
- The bed is moveable.
- The room does not have an unobstructed minimum turning space of 150cm x 150cm next to the bed.
- The height of the desk is 78cm.
- The desk is not height adjustable.
- The desk knee recess does not have the recommended dimensions of 70cm (height) x 50cm (depth).
- The height and depth of the knee recess is 73cm x 33cm.
- The room surveyed had a height adjustable chair with armrests and an armchair.
- Wardrobes have been adapted to allow use from a seated position.
- Light switches are between 75cm and 120cm (4ft) from floor level.
- Electric sockets are between 40cm and 100cm (4ft) from floor level.
- The window control type(s) for the room is a/are standard lever(s).
- There is an emergency alarm in the room.
- The emergency pull cord alarm is tied up and out of reach (higher than 10cm (4") from floor).
- There is not a flashing fire alarm beacon within the room.
- The type of flooring is carpet.

Ensuite Facilities

Collapse -

- The ensuite door opens by sliding.
- The door weight is light.

- The door is locked by a sliding bolt.
- The width of the door to the ensuite is 81cm (2ft 8in).
- The dimensions of the ensuite are 150cm x 230cm (4ft 11in x 7ft 7in).
- The ensuite does have an unobstructed minimum turning space of 150cm x 150cm in front of the toilet seat.
- The ensuite has not got a non-slip floor.
- There is an emergency alarm within the ensuite.
- The emergency pull cord alarm is within reach and fully functional.
- The emergency alarm rings to reception.
- There is not a flashing fire alarm beacon within the ensuite.
- Disposal facilities are available.
- There is a/are pedal waste paper bin disposal units.
- There is a mirror.
- The mirror is not placed at a lower level or at an angle for ease of use.
- There is a shelf immediately next to or behind the toilet.
- The shelf is not between 90cm and 100cm.
- There is a wash basin.
- The wash basin can be reached from seated on the toilet.
- The wash basin is placed higher than 74cm (2ft 5in).
- The height of the wash basin is 90cm.
- There are no vertical wall-mounted grab rails at the wash basin.
- The tap type is twist/turn.
- There is not a mixer tap.
- There is not a soap dispenser.

Toilet Details

Collapse -

- The height of the toilet seat above floor level is 40cm (1ft 4in).
- The toilet has a covered cistern.
- There is not a lateral transfer space.
- There is not a spatula type lever flush.
- There is no dropdown rail.
- There is a/are wall-mounted grab rail(s) available.
- As you face the toilet, the wall mounted grab rails are on the right.
- There is a toilet roll holder.
- The toilet roll holder can be reached from seated on the toilet.
- The toilet roll holder is placed higher than 100cm (3ft 3in).
- The height of the toilet roll holder is 116cm (3ft 10in).

Bath Details

Collapse -

- The ensuite has a lowered bath.
- The height of the side of the bath from floor level is 50cm (1ft 8in).
- The tap type is twist/turn.
- There is a mixer tap.
- There is a shower over the bath.
- The shower head is height adjustable.
- The shower control type is twist/turn.
- There is a/are wall-mounted grab rail(s) available for the bath.

Colour Contrast and Lighting

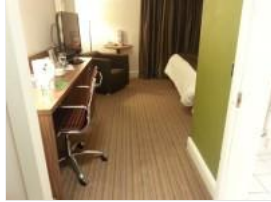
Collapse -

- The colour contrast between the external hotel room door and wall is poor.
- The colour contrast between the internal hotel room door and wall is poor.
- The colour contrast between the hotel room walls and floor is good.

- The colour contrast between the external ensuite door and wall is fair.
- The colour contrast between the internal ensuite door and wall is poor.
- The colour contrast between the ensuite walls and floor is poor.
- The colour contrast between the wall-mounted grab rails to the right of the toilet and wall is good.
- The colour contrast between the bath wall-mounted grab rails and wall is good.
- The toilet seat colour contrast is poor.
- The lighting levels in the room are low.
- The lighting levels in the ensuite are good.



1



2



3



4



5



6



7



8

Standard Room(s) (Room 38)

Collapse -

Bedroom Features

Collapse -

- The room surveyed is located on the first floor, at the rear left of the hotel.
- The room surveyed at the time of the visit was Room 38.
- There is stepped access to the room surveyed.
- There is numbered signage on or near the room door.
- The width of the door is 70cm (2ft 4in).
- The bed type is double.
- The height of the bed is 65cm (2ft 2in).
- The measurement between the bed base and floor is 5cm (2in).
- Light switches are not within 120cm (3ft 11in) from floor level.
- There is not an emergency alarm in the room.
- There is not a flashing fire alarm beacon within the room.
- The type of facilities within the ensuite include; a toilet, a wash basin and a shower.
- The ensuite door opens inwards.
- The width of the door to the ensuite is 71cm (2ft 4in).
- There is not an emergency alarm within the ensuite.
- There is not a flashing fire alarm beacon within the ensuite.
- The tap type is lever.
- There is a mixer tap.

Colour Contrast and Lighting

Collapse -

- The colour contrast between the external hotel room door and wall is poor.
- The colour contrast between the internal hotel room door and wall is poor.
- The colour contrast between the hotel room walls and floor is good.
- The colour contrast between the external ensuite door and wall is poor.

- The colour contrast between the internal ensuite door and wall is poor.
- The colour contrast between the walls and floor in the ensuite is fair.
- The lighting levels in the room are low.
- The lighting levels in the ensuite are good.

Comments

Collapse -

- There is a deep step to access the shower.



1



2



3



4



5



6



7



8



9

Standard Room(s) (Executive Room - The Woburn Room)

Collapse -

Bedroom Features

Collapse -

- The room surveyed is located on the first floor, in the corridor to the left of the stairs at the front of the hotel.
- The room surveyed at the time of the visit was Room 48 - The Woburn Room.
- There is stepped access to the room surveyed.
- There is written and numbered signage on or near the room door.
- The width of the door is 70cm (2ft 4in).
- The bed type is double.
- The height of the bed is 66cm (2ft 2in).
- The measurement between the bed base and floor is 26cm (10in).
- Light switches are not within 120cm (3ft 11in) from floor level.
- There is not an emergency alarm in the room.
- There is not a flashing fire alarm beacon within the room.
- The type of facilities within the ensuite include; a toilet, a wash basin, a bath and a shower.
- The ensuite door opens inwards.
- The width of the door to the ensuite is 72cm (2ft 4in).
- There is not an emergency alarm within the ensuite.
- There is not a flashing fire alarm beacon within the ensuite.
- The tap type is lever.
- There is a mixer tap.

Colour Contrast and Lighting

Collapse -

- The colour contrast between the external hotel room door and wall is poor.
- The colour contrast between the internal hotel room door and wall is poor.
- The colour contrast between the hotel room walls and floor is good.
- The colour contrast between the external ensuite door and wall is poor.
- The colour contrast between the internal ensuite door and wall is fair.
- The colour contrast between the walls and floor in the ensuite is good.
- The lighting levels in the room are low.
- The lighting levels in the ensuite are good.

Comments

Collapse -

- The height of the bath is 53cm.
- The bath has handrails on either side.
- The shower is over the bath.
- The shower has an adjustable shower head.
- The controls for the bath taps and shower are twist/turn mixer.



1



2



3



4



5



6



7



8



9



10

Fitness Suite (Mini Gym)

Collapse -

Access to Fitness Suite

Collapse -

- The fitness suite is located on the first floor.
- The fitness suite is 27m (29yd 1ft) from the stairs.
- There is not level access to the fitness suite.
- There are doors into the fitness suite.
- The doors open away from you (push).
- The doors are single.
- The doors are heavy.

- The opening is 67cm (2ft 2in) wide.

Fitness Suite (General)

Collapse -

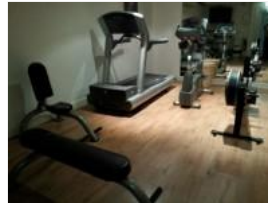
- Staff receive some training in assisting disabled people.
- Training provided is by the hotel.
- Equipment suitable for mobility or sensory impaired users includes rowing machines and free weights.
- A portable hearing loop is not available for induction.
- There is not clear manoeuvring space between equipment.
- There is level access to all of the equipment.



1



2



3



4

Accessible Toilet(s)

Collapse -

- There is an/are accessible toilet(s) for public use.

Location and Access

Collapse -

- The accessible toilet surveyed is not for the sole use of disabled people.
- This accessible toilet is located on the ground floor, at the front left of the hotel in the corridor to the left just past reception.
- This accessible toilet is approximately 35m (38yd 10in) from the car park ramped entrance.
- There is step-free access to the accessible toilet.

Features and Dimensions

Collapse -

- This is a shared toilet.
- A key is not required for the accessible toilet.
- There is pictorial and written text signage on or near the toilet door.
- The door opens outwards.
- The door is light.
- The door is locked by a twist lock.
- The width of the accessible toilet door is 80cm (2ft 7in).
- The dimensions of the accessible toilet are 190cm x 117cm (6ft 3in x 3ft 10in).
- The accessible toilet does not have an unobstructed minimum turning space of 150cm x 150cm.
- The toilet has not got a non-slip floor.
- There is a lateral transfer space.
- As you face the toilet pan the transfer space is on the right.
- The lateral transfer space is 123cm (4ft).
- There is a flush on the transfer side.
- There is not a spatula type lever flush.
- There is a dropdown rail on the transfer side.
- There is an emergency alarm.
- The emergency pull cord alarm is fully functional.
- There is not a flashing fire alarm beacon within the toilet.
- Disposal facilities are available in the toilet.
- There is a/are female sanitary and waste paper pedal bin disposal units.

- There is a/are coat hook(s).
- There are coat hooks in the toilet at 118cm and 161cm from the floor.

Position of Fixtures

Collapse -

- There is a/are wall-mounted grab rail(s) available.
- As you face the toilet the wall-mounted grab rail(s) is/are on the left.
- There is not a vertical wall-mounted grab rail on the transfer side.
- There is a horizontal wall-mounted grab rail on the opposite side of the seat to the transfer space.
- There is a mirror.
- The mirror is not placed at a lower level or at an angle for ease of use.
- There is a shelf next to the toilet.
- The shelf is not between 90cm and 100cm.
- The toilet has a cistern.
- The height of the toilet seat above floor level is 44cm (1ft 5in).
- There is a toilet roll holder.
- The toilet roll holder can be reached from seated on the toilet.
- The toilet roll holder is not placed higher than 100cm (3ft 3in).
- There is a wash basin.
- The wash basin cannot be reached from seated on the toilet.
- The wash basin is not placed higher than 74cm (2ft 5in).
- There is a vertical wall-mounted grab rail on the right hand side of the wash basin.
- The wash basin tap type is lever.
- There is a mixer tap.
- There is a soap dispenser.
- The soap dispenser cannot be reached from seated on the toilet.
- The height of the soap dispenser is 69cm.
- There is a towel dispenser.
- The towel dispenser cannot be reached from seated on the toilet.
- The towel dispenser is placed higher than 100cm (3ft 3in).
- The height of the towel dispenser is 108cm (3ft 7in).
- There is a hand dryer.
- The hand dryer cannot be reached from seated on the toilet.
- The hand dryer is placed higher than 100cm (3ft 3in).
- The height of the hand dryer is 109cm (3ft 7in).

Colour Contrast and Lighting

Collapse -

- The contrast between the external door and wall is poor.
- The contrast between the internal door and wall is poor.
- The contrast between the dropdown rail(s) and wall is poor.
- The contrast between the wall-mounted grab rail(s) and wall is good.
- The contrast between the wall-mounted grab rail(s) to the left of the toilet and wall is good.
- The contrast between the wash basin wall-mounted grab rail(s) and wall is good.
- The toilet seat colour contrast is poor.
- The contrast between the walls and floor is poor.
- The lighting levels are good.

Comments

Collapse -

- The accessible toilet is also used as the standard female toilet.